



Tracking and luminaire:

First trunking rail should have one side connecting plate&last trunking rail with no connecting plate on both sides, then fix the Luminaire to trunking rail then lock holder, then keep end caps at both sides.



Step 1 Mounting Suspension

Adjust length of suspension cord:
a. press down Hexagon bolt;
b. Pull in/out cord to adjust length

Click in mounting clip into trunking rail

Step 2 Connecting Power Supply

Put in conduit with cable inside and pull up conduit gland to lock

Connect wires according labeling on wires to feed in connector then connect to connector in trunking rail

Step 3 Connecting Trunking Rail

Both trunking rails should keep in perfect position then push to click



Step 4 Mounting Luminaire

Slide knob to select phase L1/L2/L3



Make sure male & female connectors in right position then fix the luminaire to trunking rail

Step 5 LED linear lighting system

Including luminaires

Including luminaires and sensor

Including luminaires and spotlight

Including luminaires and black cover

Wire diagram of triple circuits function



Pendant and mounting installation

Starting installation distances point should be 800 mm to 1000 mm, then in between 1st & 2nd point should be 3000 mm max



Four options for installation



Safety notes:
Installation should be performed only by
qualified electrician .

- Make sure no voltage while installation .
- Connect cable wires according to wire labeling.
- Max current should not exceed 16A in one power feed in circuit.



LED linear lighting System composition

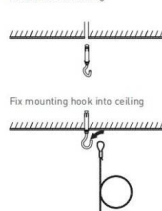
Terminal module:

Terminal module can be independently installed as
a single unit, it also can be connected at end of one
linear light row.

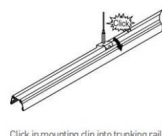


Step 1 Mounting Suspension

Drill a hole on ceiling

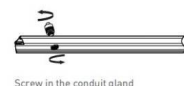


Adjust length of suspension cord:
a. press down Hexagon bolt;
b. Pull in/out cord to adjust length

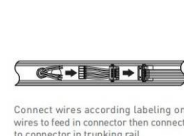


Step 2 Connecting Power Supply

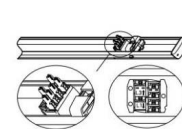
Cut the Rubber cap to pass the power
cable



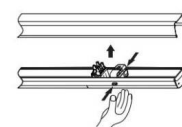
Put in conduit with cable inside and
pull up conduit gland to lock



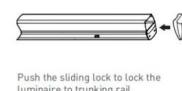
Step 3 Mounting Luminaire



Slide knob to select phase L1/L2/L3



Make sure male & female connectors
in right position then fix the luminaire
to trunking rail



Push the sliding lock to lock the
luminaire to trunking rail